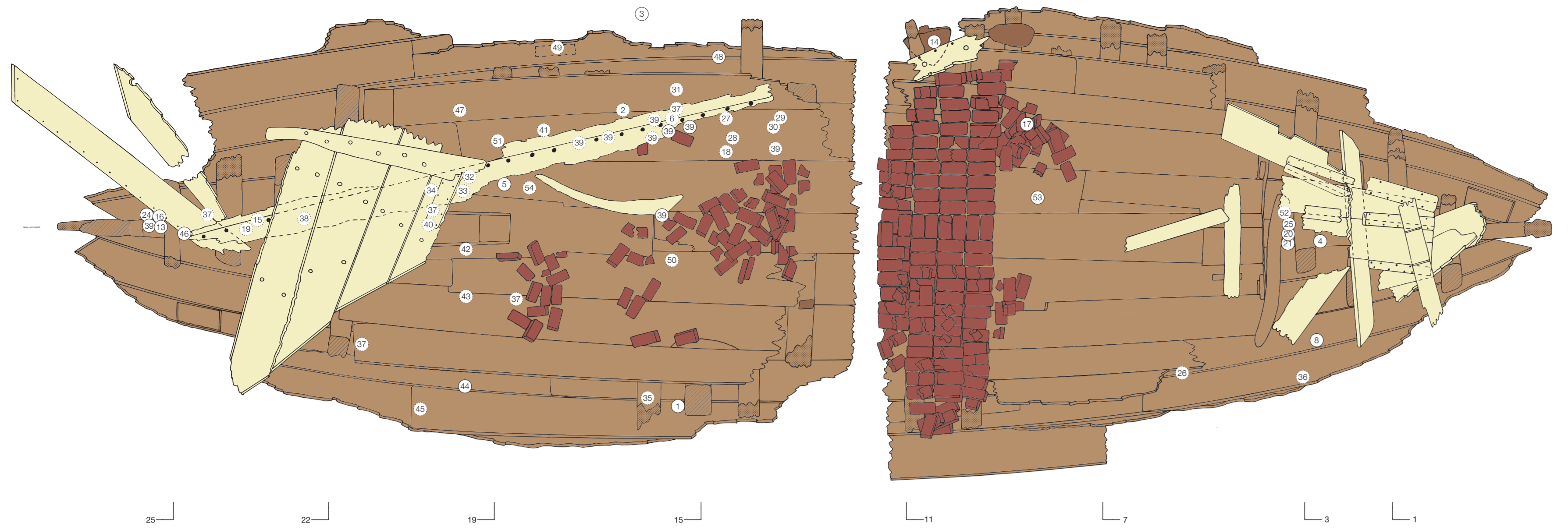


A. The wreck



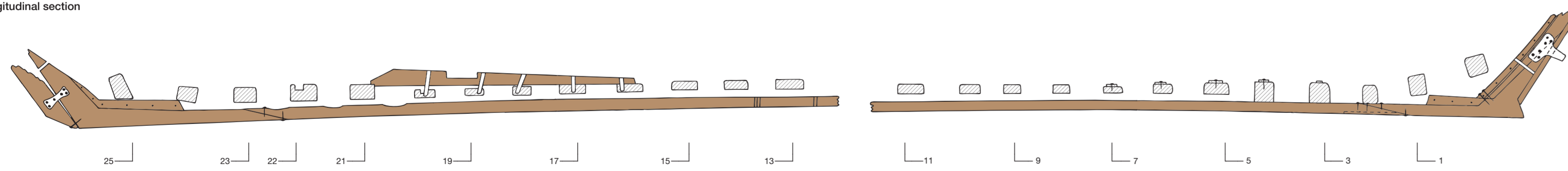
D. Cross-sections



B. Top view



C. Longitudinal section



Legend to A

- Stern- and stem hooks, shell planking, frames, mast step, load-bed
- Detached timbers
- Bricks
- Anchor fluke (no 14), two erratic stones
- Find number in the field
- Cross-cut wood, scarf in frame
- Broken-off timber
- Frame number

Legend to B-C-D

- Keel plank, stern- and stem hooks, false stern, mast step
- Bottom planking
- Planking of the sides
- Ceiling
- Cross-cut wood, scarf in frame
- Broken-off timber
- Frames
- Frame number

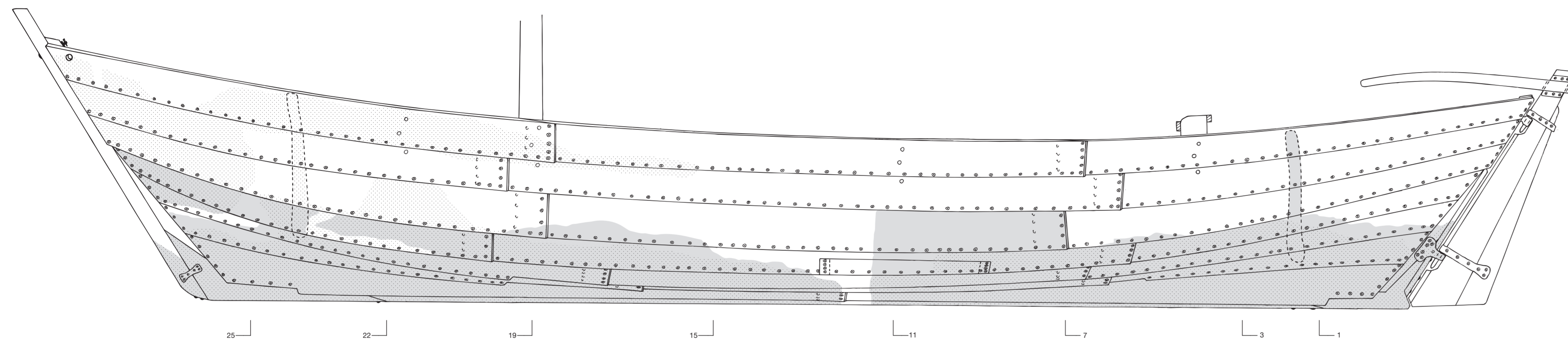
Field drawings

- A. The wreck in situ with the overlying detached timbers, the stack of bricks, the anchor fluke and the distribution of finds.
- B. Top view of the cargo hold and remains of the ceiling and load-bed, after removal of the bricks and the detached timbers.
- C. Longitudinal section along the keel plank and the stem and stern.
- D. Cross-sections.

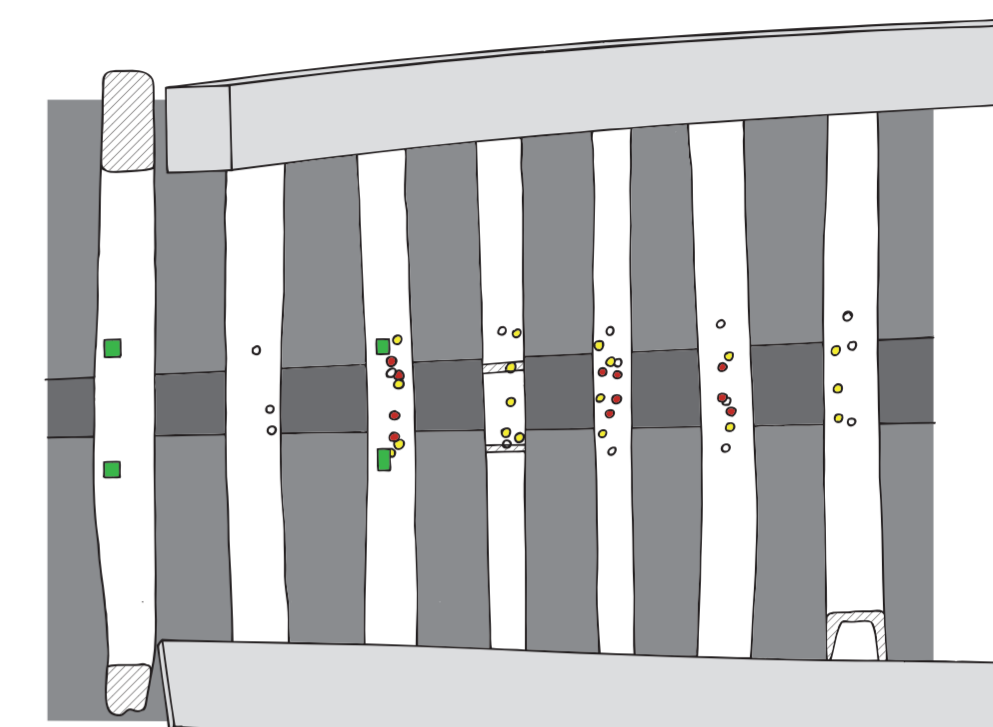
Scale



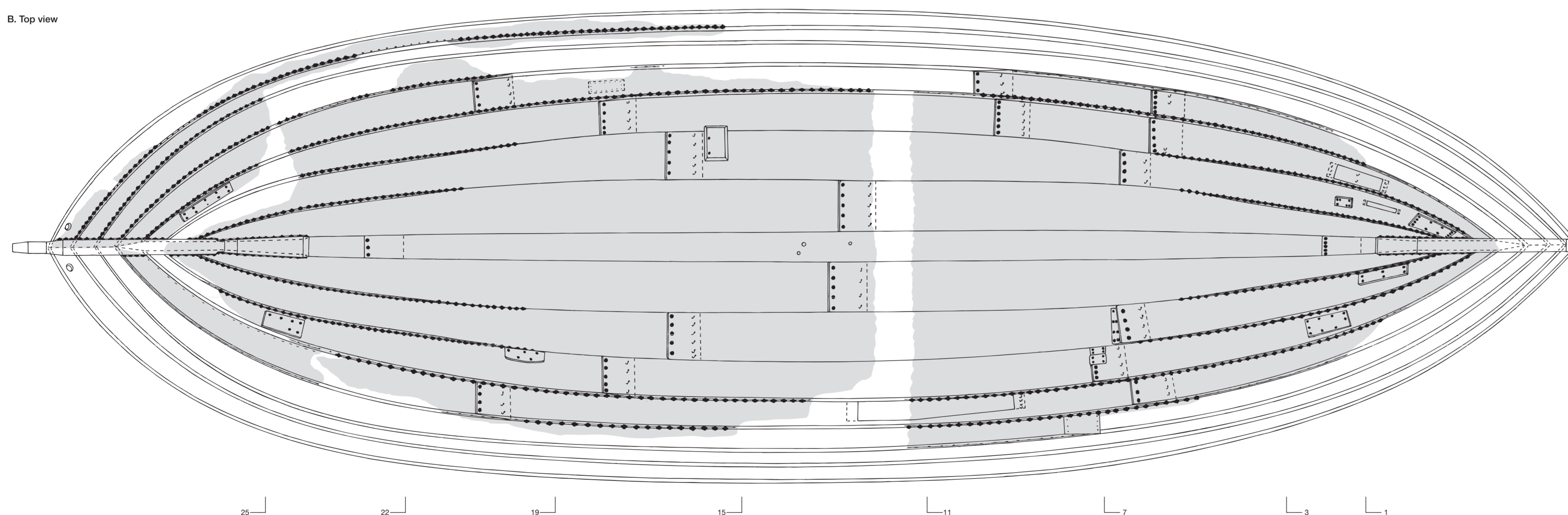
A. Reconstructed exterior of the port side



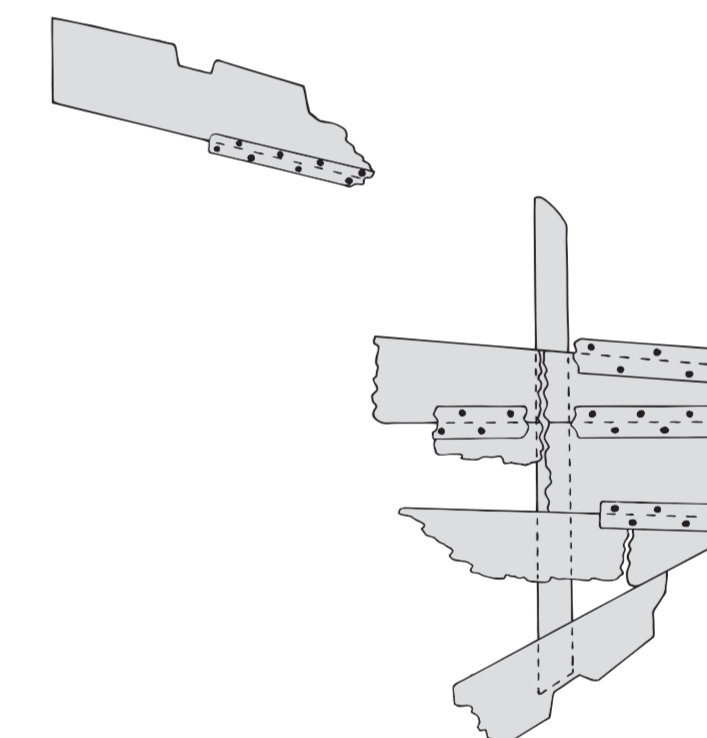
C. Location of the earlier mast step



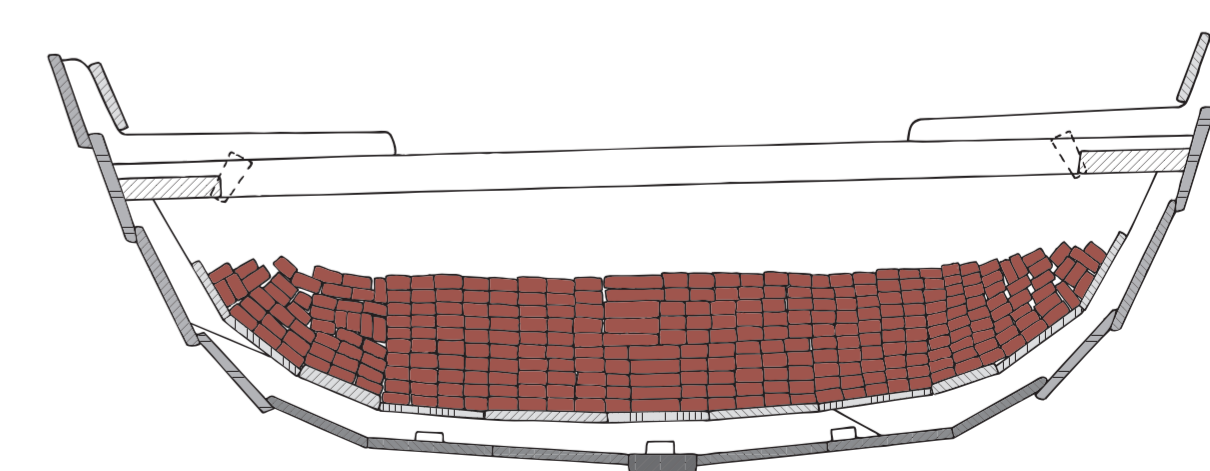
B. Top view



D. Recovered parts of the afterdeck



E. Cross-section at frame 11



Legend to A-B

- Timbers of the port side (in A); recovered timbers (in B)
- Timbers of the starboard side (in A)
- Frame number

Legend to C-D-E

- Keel plank
- Bottom planking
- Planking of the sides
- Ceiling, recovered timbers of the afterdeck
- Frames, crossbeams, gangways, deck knees
- Cross-cut wood
- Bricks
- Blind treenails for fastening the mast step
- Blind treenails for fastening the earlier mast step
- Treenails for fastening floor timbers to bottom planking or keel plank
- Mortises for upright posts, 3-5 cm deep

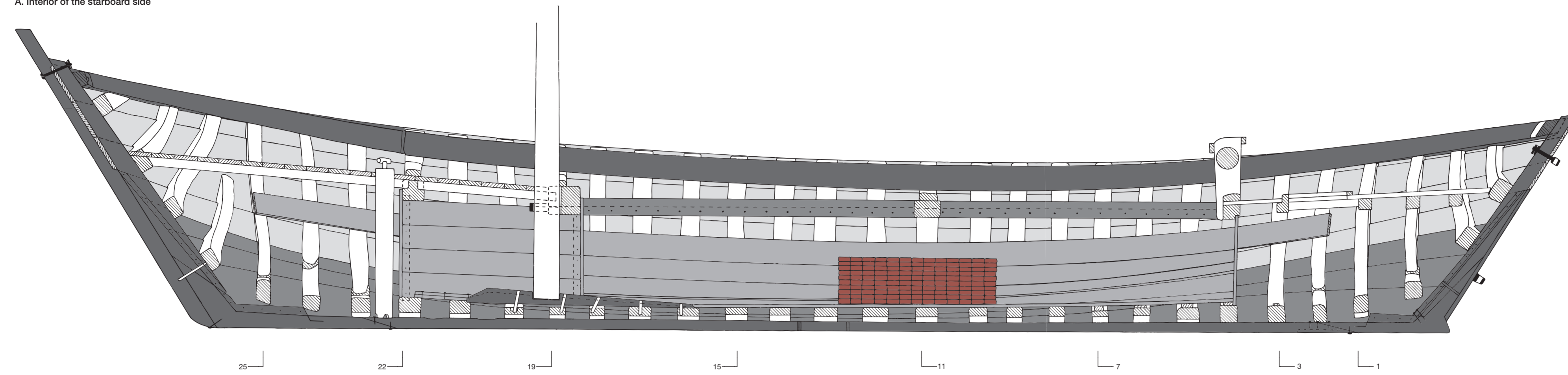
Reconstruction drawing

- A. Exterior of the port side, combining the recovered timbers of the port and starboard sides, with the futlocks of frames 2 and 24.
- B. Top view of the shell with the plank scars, the repairs and the recovered timbers.
- C. Location of the earlier mast step and indications of a short construction around the mast.
- D. Recovered parts of the afterdeck.
- E. Cross-section at frame 11, with the cargo of bricks.

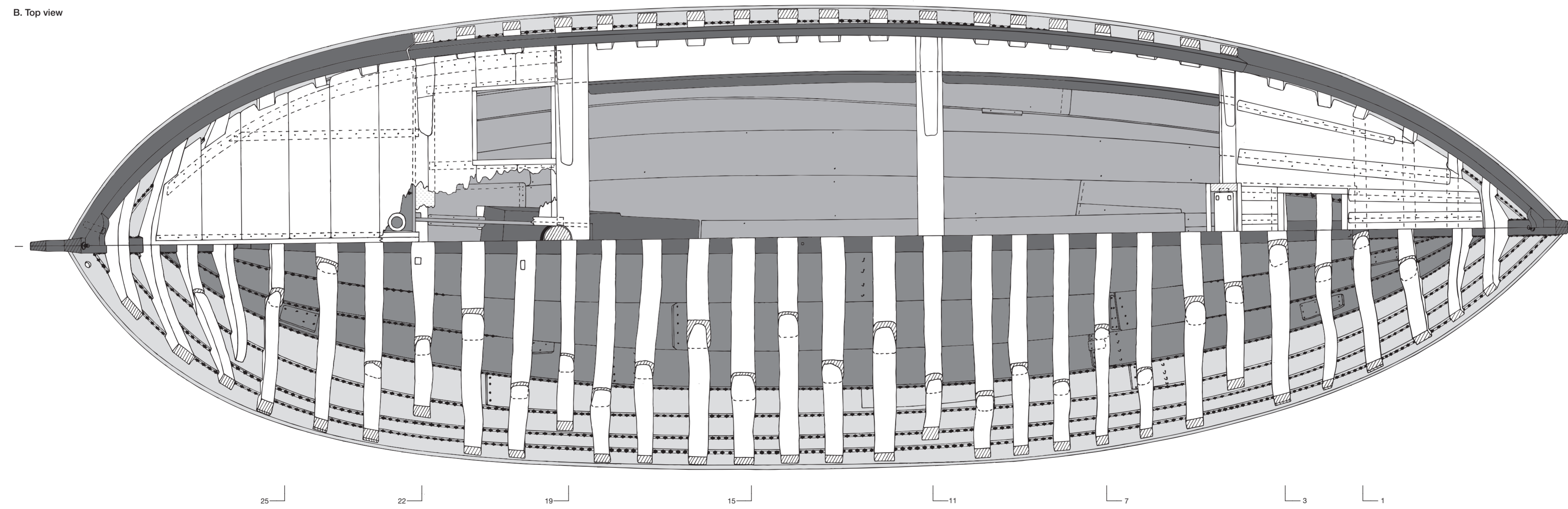
Scale

0 m 1 m

A. Interior of the starboard side



B. Top view

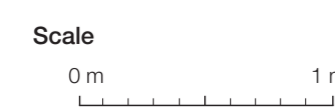


**Legend**

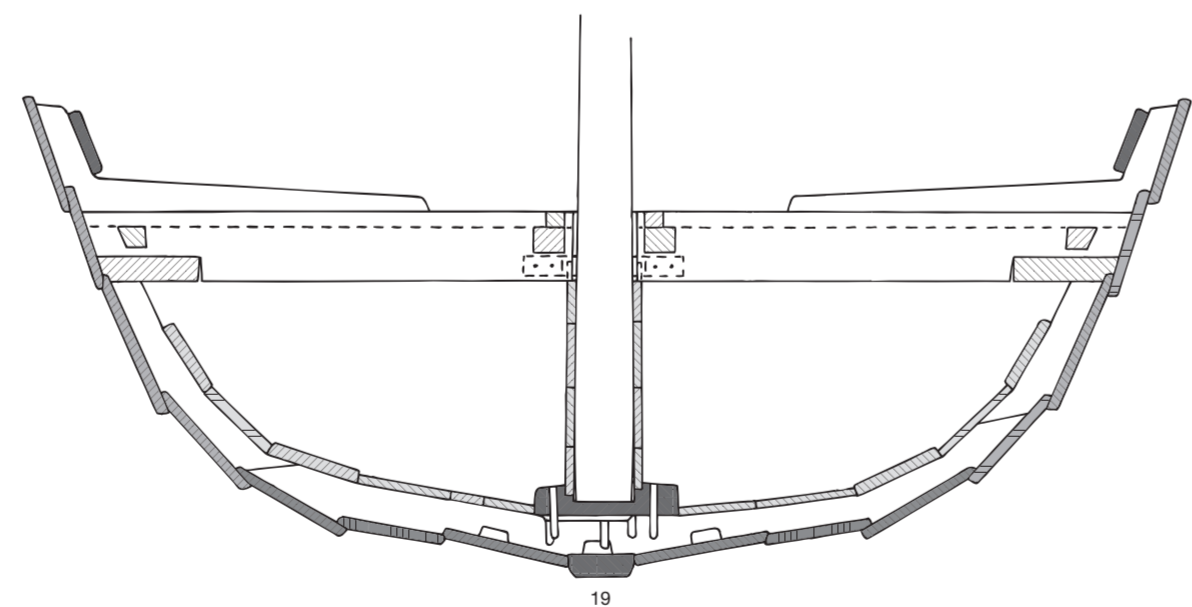
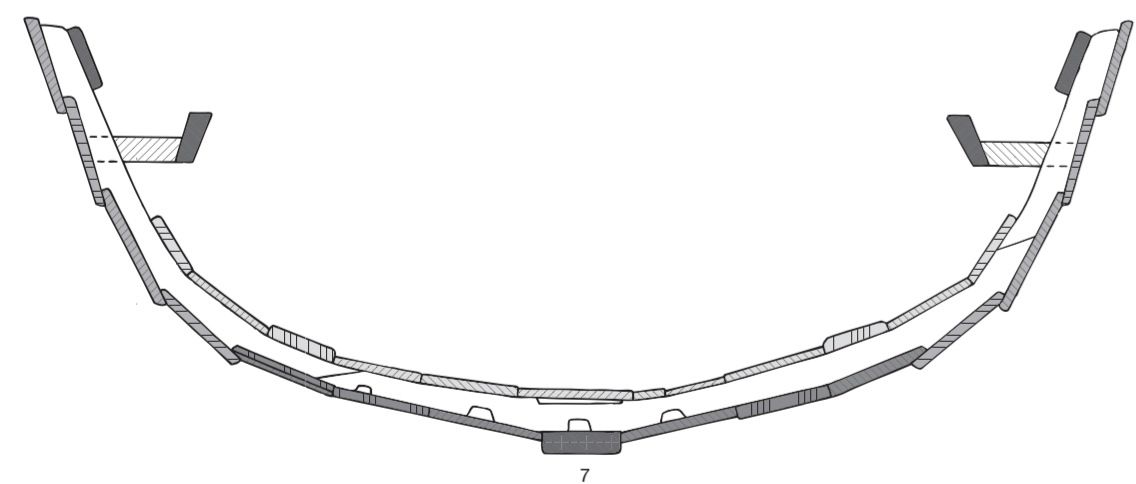
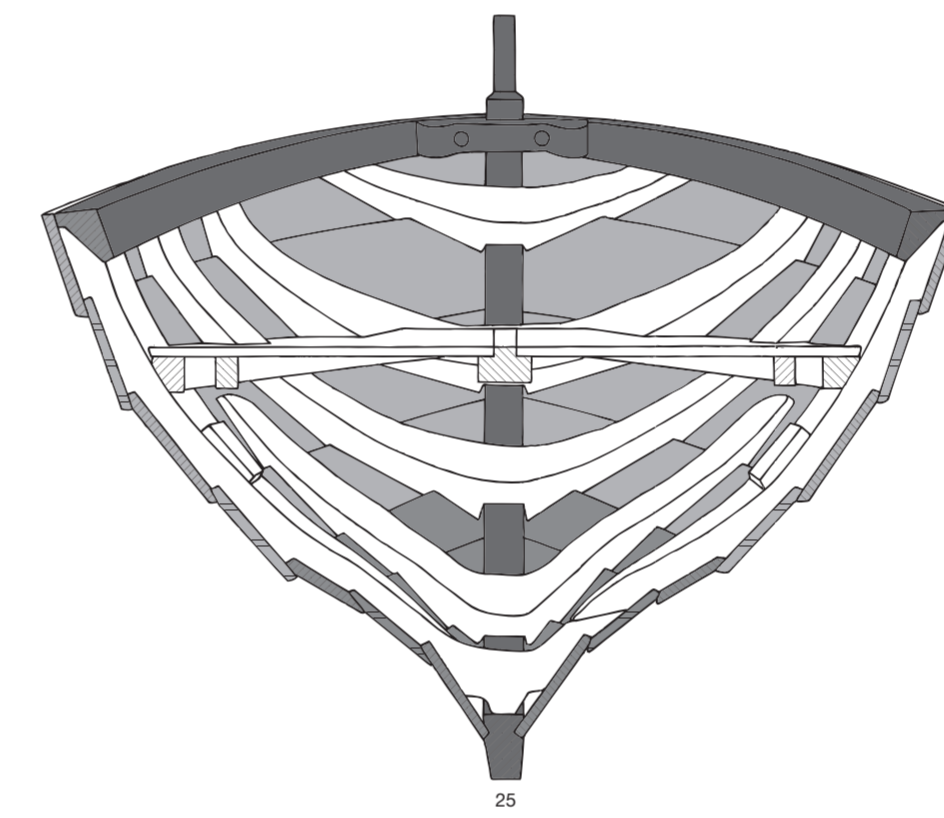
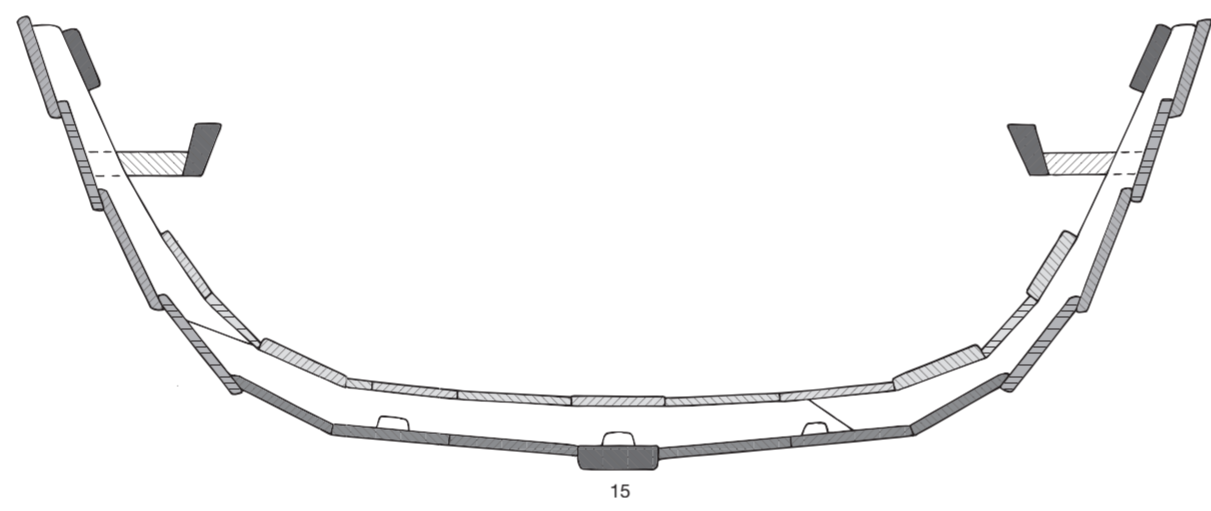
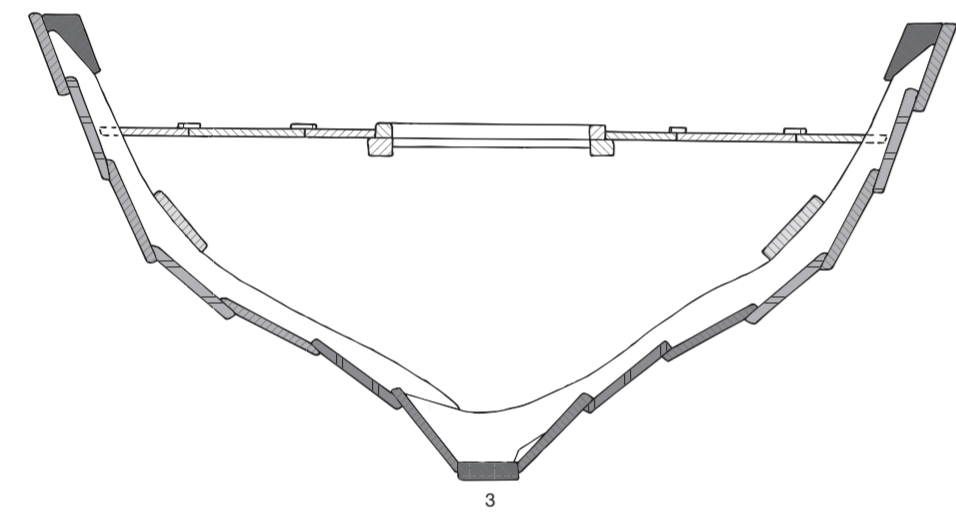
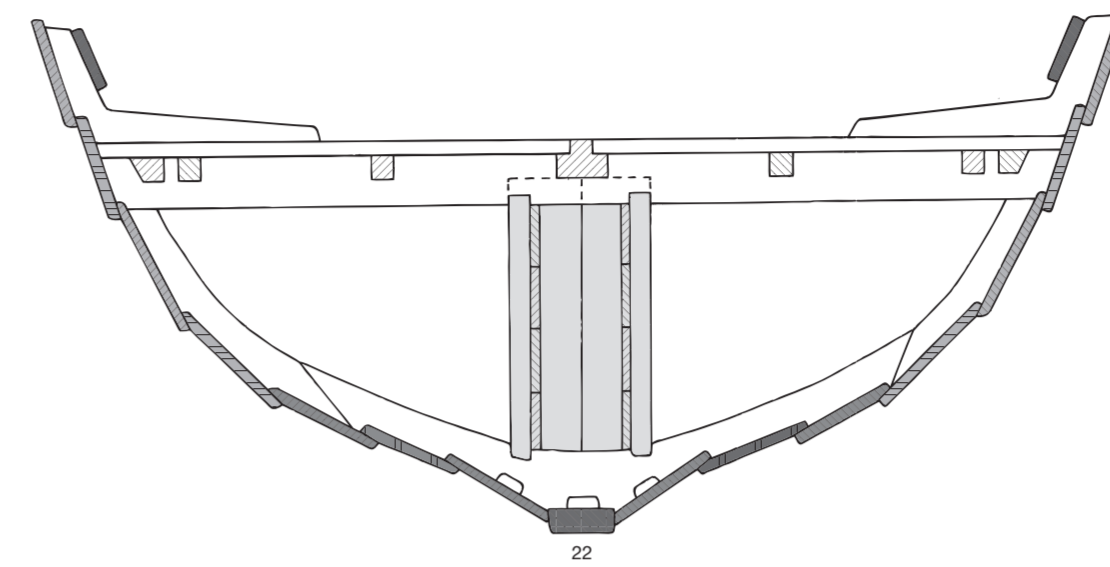
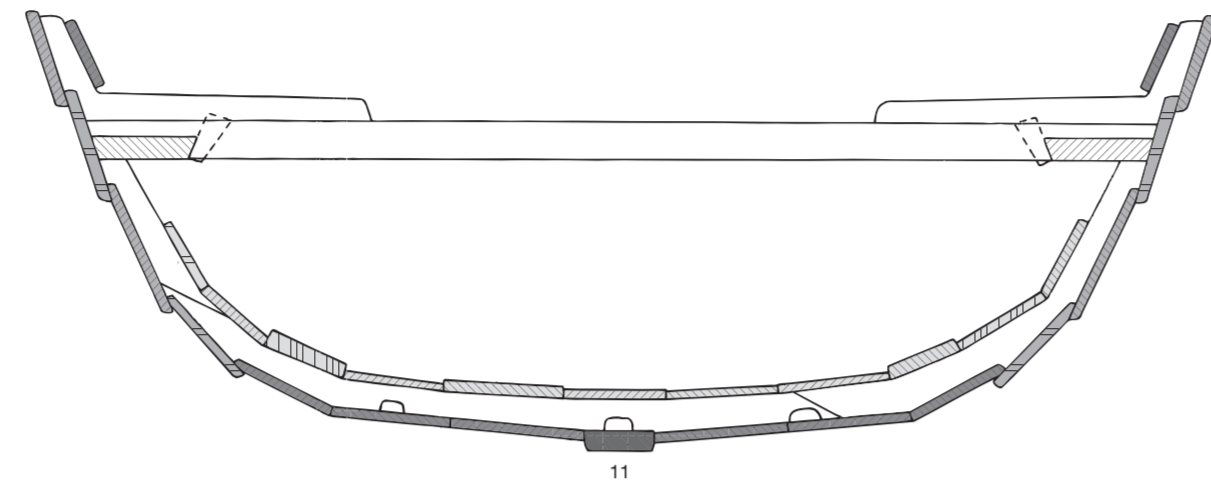
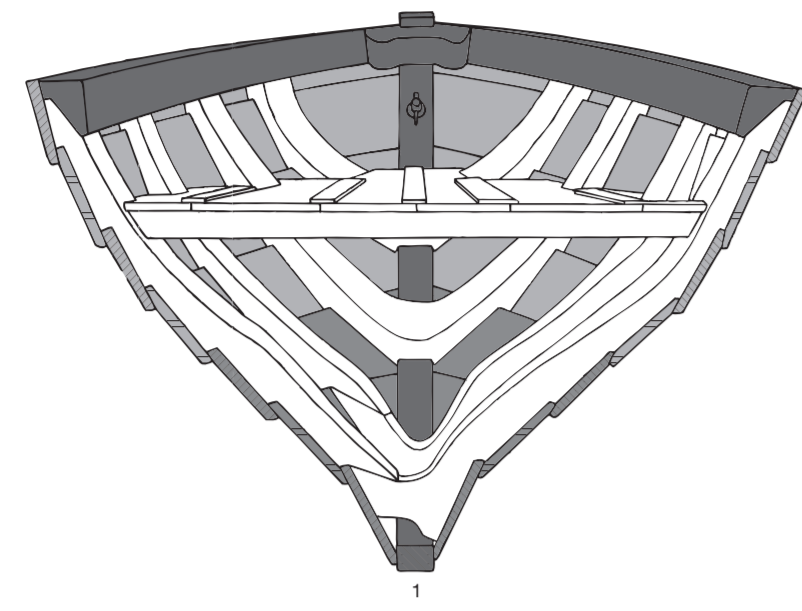
- Keel plank, stern- and stem hooks, stern- and stemposts, false stern and stem, mast step, coaming, inwale
- Bottom planking
- Ceiling, construction around the mast
- Planking of the sides
- Frames, deck beams, stringers, decks, gangways, windlass, pump barrel, mast
- Cross-cut wood
- Clamped moss caulking
- Bricks
- Frame number

**Reconstruction drawings**

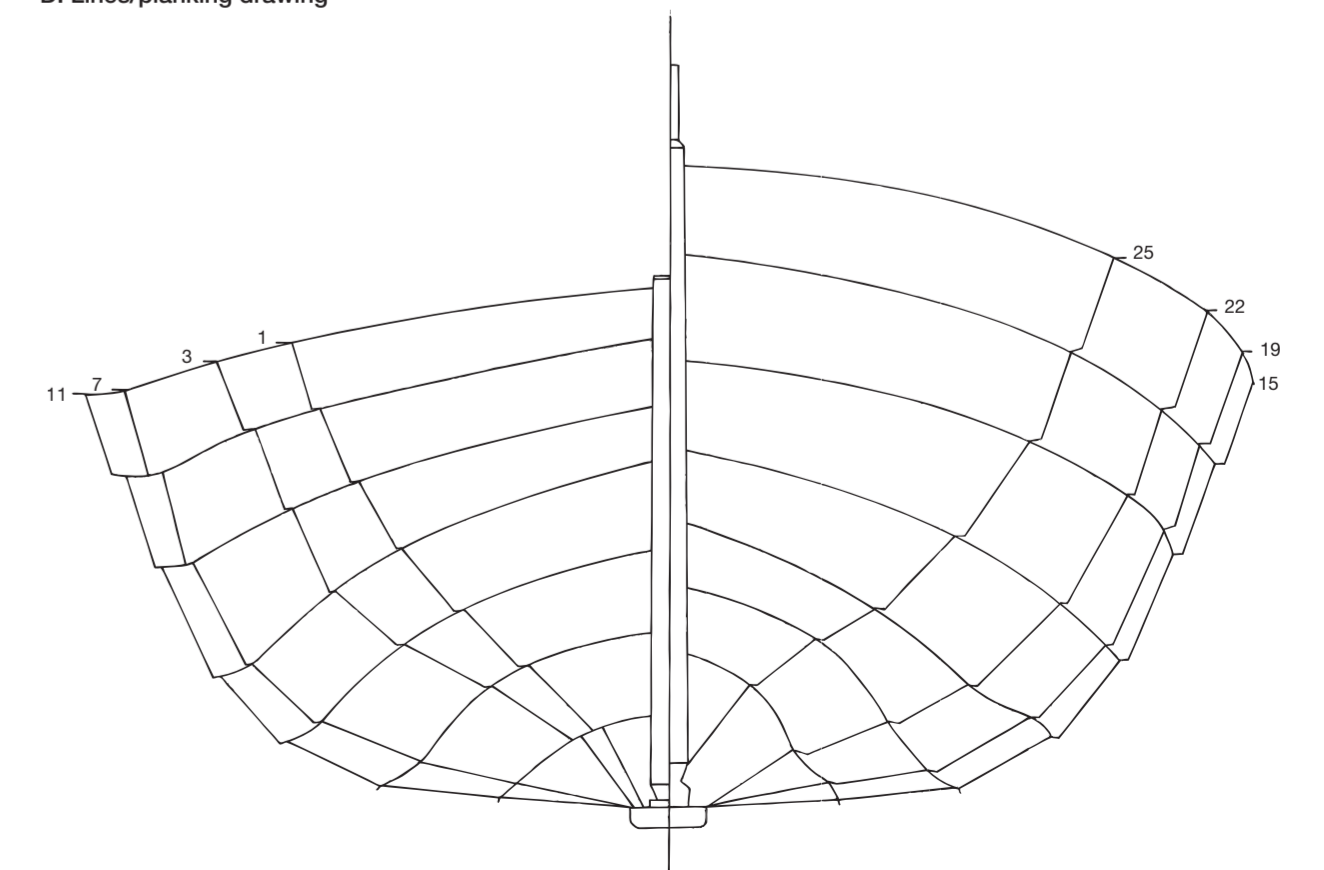
- A. Interior of the starboard side with the stack of bricks in the hold.
- B. Top view of the deck plan (starboard) and the frame plan (port).



C. Cross-sections



D. Lines/planking drawing



Legend

- Keel plank, stern- and stem hooks, stern- and stemposts, false stern and stem, mast step, coaming, inwale
- Bottom planking
- Ceiling, construction around the mast
- Planking of the sides
- Frames, deck beams, stringers, decks, gangways, windlass, pump barrel, mast
- Cross-cut wood
- Frame number

Reconstruction drawings

- C. Cross-sections.
- D. Lines/planking drawing of the upper edges of the strakes. On the right, the interior of the forebody; on the left, of the afterbody. Cf. the cross-sections at frames 1, 3, 7, 11, 15, 19, 22 and 25.

Scale

